



# REKLUSE<sup>®</sup>

## clutchcover

### REKLUSE MOTOR SPORTS

---

The Rekluse Clutch Cover Kit

## CLUTCH COVER INSTALLATION GUIDE

Doc ID: 199-300  
Doc Rev: 121316

### INSTALLATION TIPS

The Rekluse clutch cover provides clearance for all Rekluse clutch systems using either the OEM gasket or O-ring. If the OEM O-ring or gasket is damaged it should be replaced to guarantee proper sealing.

Some models require spacing or adjustment of the brake pedal to gain clearance of the cover. See model notes below for specific instructions.

Take note of each OEM clutch cover bolts specific location as length can vary between them. Failure to replace these bolts in the proper location after clutch cover installation can result in damage to your motorcycle.

#### **Increased Oil Capacity:**

The Rekluse clutch cover is slightly deeper than the stock cover, increasing the oil capacity of some models very slightly. If your motorcycle or ATV uses a dip-stick, sight glass or oil-level check bolt, continue to use the method described in the vehicle's owner's manual to fill to the proper oil level. If your vehicle's owner's manual only specifies an oil amount, add 10cc (10ml) additional oil to the amount specified in the manual.

*See the reverse of this page for specific model notes.*

©2014 Rekluse Motor Sports  
Rekluse Motor Sports, Inc.  
12000 W Franklin Rd  
Boise, Idaho 83709  
208-426-0659  
support@rekluse.com

## MODEL NOTES:

- **All Honda Models**

A length of O-ring cord is provided with your cover as the OEM O-ring occasionally does not fit back into the Rekluse or OEM cover after removal. Place a dab of grease into the O-ring groove in four spots to hold the O-ring cord in place. Lay the O-ring into the groove around the cover and trim it so that the ends meet at the top (12 o' clock) of the clutch cover.

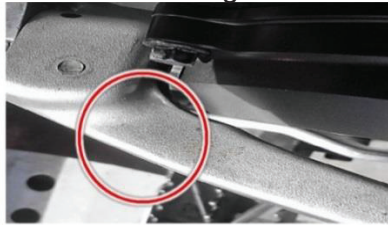
- **Honda CRF250X**

To utilize the oil feeding feature in the Rekluse clutch cover you must replace the OEM throw-out assembly with the included 743-006 Rekluse throw-out assembly. If you do not use the Rekluse throw-out assembly you will have clutch cover interference.

- **Honda TRX450 ATV**

All Models: To provide clearance between the cover and brake pedal, install the included brake pedal spacing washer between the frame and brake pedal. Rekluse recommends using a medium strength thread locking compound on your brake pedal bolt.

Kick-Start Models: **You must modify your kick-start lever to clear the clutch cover!** The Rekluse cover is deeper than OEM which provides adequate internal clearance for Rekluse clutch components, so interference will occur with your kick-start lever unless it is modified in a similar fashion to the photos below. Be sure not to damage the structural integrity of the lever.



- **KTM 400/450/505/530 (08-11)**  
**Husaberg 390/450/570 FE/FX (09-12)**

To provide clearance between the cover and brake pedal tip, remove the OEM tip and replace it with the included Rekluse tip using the provided hardware and thread lock. Your pedal position will need to be lowered about ¼-inch (6-mm), so the Rekluse tip is taller to compensate. Refer to your owner's manual for instructions about properly adjusting brake pedal height.

- **Kawasaki KX250F / KX450F / KLX450F**  
**Yamaha YZ450F (10+)**

To provide clearance between the cover and brake pedal, install the included thick brake pedal spacer between frame and pedal in place of the thin OEM spacer. Be sure to match OEM torque specifications on the brake pedal bolt. Reuse the OEM cotter pin if applicable. Rekluse recommends using a medium strength thread locking compound on your brake pedal bolt.

- **Yamaha YZ250 2 stroke**

To provide clearance between the cover and brake pedal, install one of the two included brake pedal spacers between the frame and pedal. Proper spacer selection is as follows.

**1999-2014** – use the thinner brake pedal spacer

**2015** - use the thicker brake pedal spacer

Use Loctite to secure the brake pedal bolt upon reassembly. Torque the bolt to OEM specifications and reuse the OEM cotter pin if your model allows.

- **Kawasaki KX250F (04-08)Suzuki RMZ250 (04-06)**

You must use the included gasket with the Rekluse clutch cover to provide adequate clearance for the Core EXP clutch—failure to do so will result in clutch damage. You must also install the included brake pedal spacer. Rekluse recommends using a medium strength thread locking compound on your brake pedal bolt.

**KTM/Husqvarna 85/105cc 2-strokes**

Reuse the OEM crush washer for the oil check bolt.