



# **INSTALLATION & USER'S GUIDE**

Suzuki GSX-R 600/750  
2008-2020

# **TABLE OF CONTENTS**

OVERVIEW .....	3
INSTALLATION TIPS .....	3
TOOLS NEEDED.....	4
INCLUDED PARTS .....	5
DISASSEMBLE THE CLUTCH .....	6
CLUTCH PACK INSTALLATION.....	8
Notes for installation.....	8
Clutch pack.....	8
PRESSURE PLATE INSTALLATION.....	11
SET THE LEVER FREE PLAY .....	12
SETTING THE CLUTCH LIFT PINS .....	13
CLUTCH COVER INSTALLATION.....	14
<b>MAINTENANCE</b> .....	15
Clutch wear .....	15
<b>INSPECT THE CLUTCH PACK</b> .....	17
NEED ADDITIONAL HELP?.....	18

# OVERVIEW

This kit replaces the OE (Original Equipment) or “stock” clutch pack with a Rekluse-designed high quality clutch pack designed specifically for your bike model. The following is a summary of what is replaced:

- All OE steel drive plates will be replaced with Rekluse drive plates
- All OE friction disks will be replaced with Rekluse TorqDrive® disks
- The OE pressure plate springs will be replaced.

# INSTALLATION TIPS

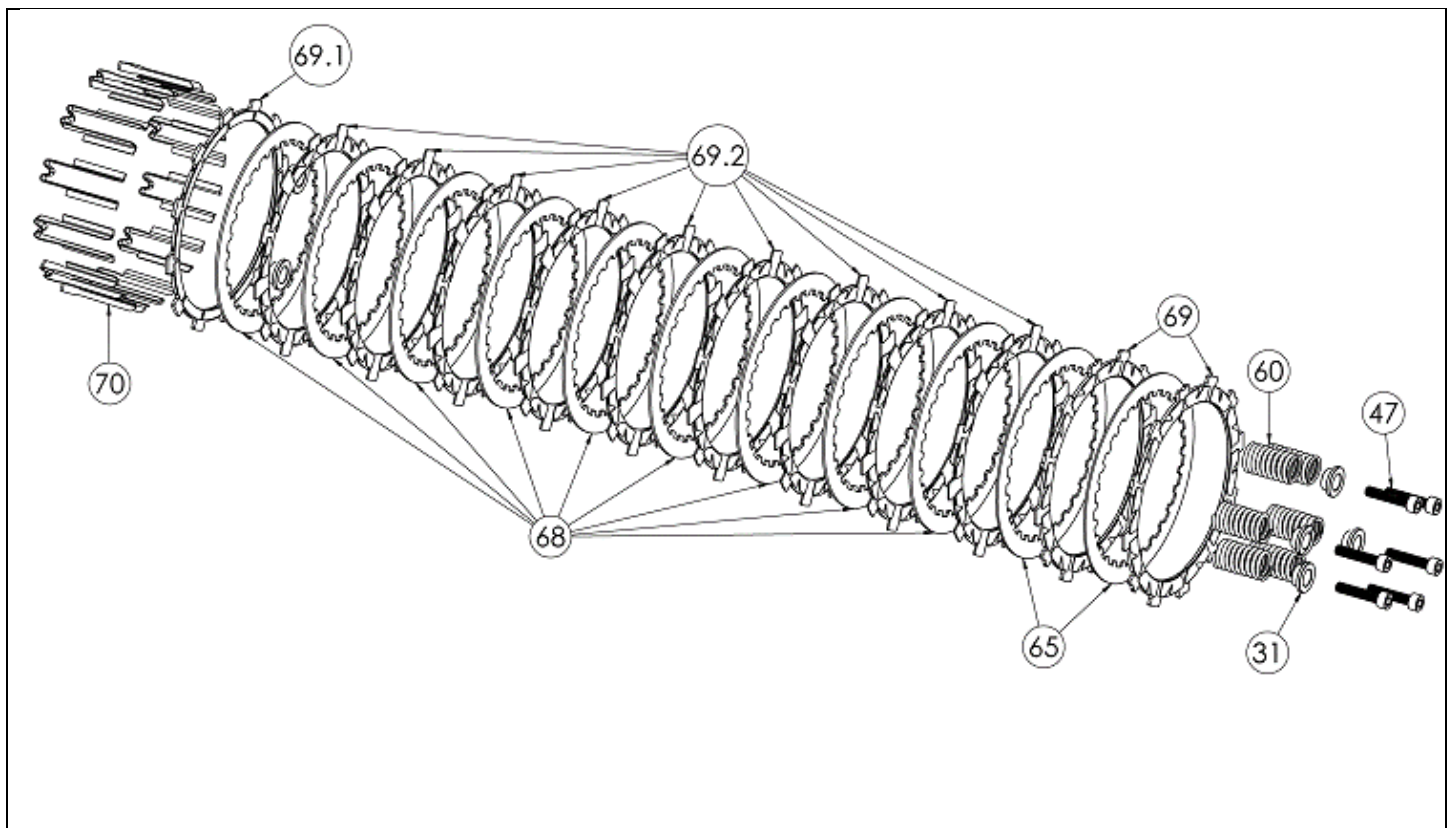
- Read this entire document before performing any steps.
- Read the safety information sheet included with your kit.
- If you install this product for a customer or another person, instruct them to read the **Safety Information** document and the **Installation and User Guide** before operating the bike with the product.
- Protect eyes and skin – wear safety glasses and thin disposable work gloves. Work in a well ventilated area.
- For optimal clutch performance Rekluse recommends using fresh, clean oil that **meets JASO-MA** oil rating requirements. Rekluse offers Factory Formulated Oil™ developed specifically for Rekluse products. Rekluse Factory Formulated Oil is a perfect complement to any OEM or aftermarket wet clutch. Visit [www.rekluse.com](http://www.rekluse.com) to learn more.
- Use the torque values listed in the instructions. Otherwise, use the torque specifications found in your OE service manual.



# **TOOLS NEEDED**

- 4mm allen
- 5mm allen
- 8mm socket
- 10mm socket
- Phillips screwdriver
- Torque wrench
- Pick set
- 10mm wrench
- 12mm wrench
- Liquid gasket

# INCLUDED PARTS



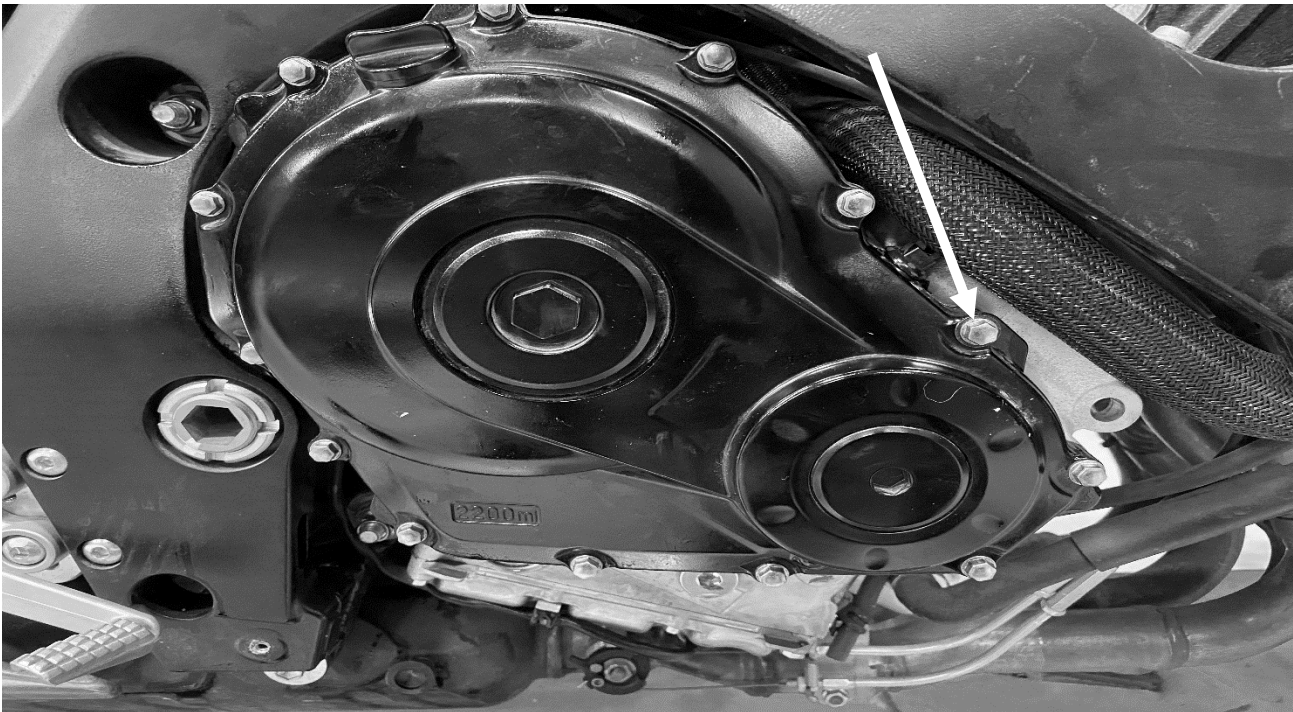
Item	Description	Qty.
70	Basket sleeves	12
68	Steel drive plates - .060" (1.5 mm)	9
65	Steel drive plates - .048" (1.2 mm)	2
69.2	TorqDrive® friction disks	9
69.1	Judder friction disk - .110" (2.8mm)	1
69	Friction Disk – Thick .110" (2.8mm)	2
60	Pressure plate springs	6
31	Screw sleeve	6
47	Pressure plate screws	6

Visit [www.rekluse.com/support](http://www.rekluse.com/support) for a full parts fiche illustration and part numbers.

# **DISASSEMBLE THE CLUTCH**

1. With the bike on its side stand, use an 8mm socket to remove the clutch cover. When removing the cover take care to locate the two dowel pins and to not tear the cover gasket. If torn, replace with Suzuki part number 11482-01H00.

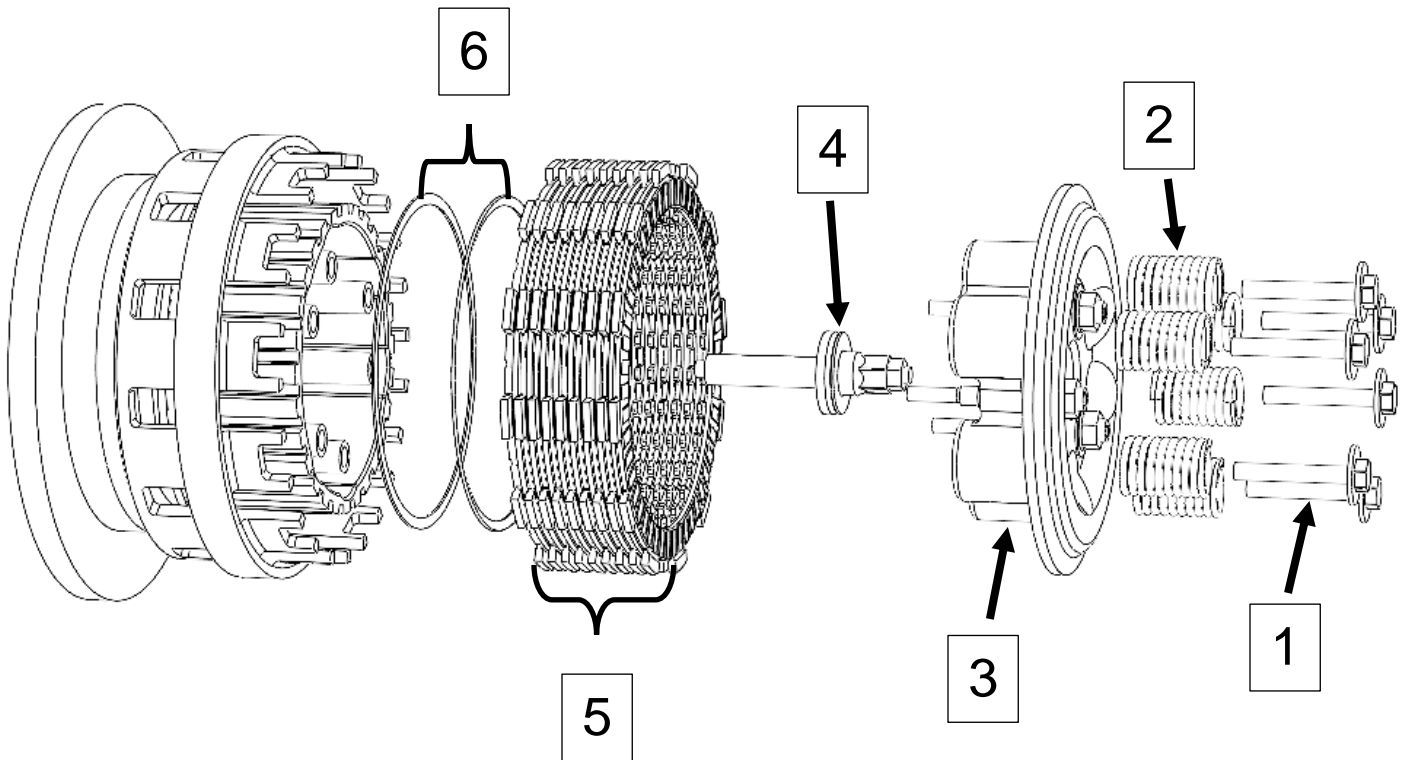
**NOTE:** *1 of the cover bolts require a sealing washer and the washer needs to be reinstalled in the OE location shown below.*



**NOTE:** *To avoid detaching the sensor inside the clutch cover; the clutch cover can be hung from the handlebar by looping a bungy cord around the handlebar and placing the opposite hook through a bolt hole.*

2. Use a 10 mm socket to remove the pressure plate bolts allowing removal of the following OE parts:

**NOTE:** Items 2, & 5 are not reused with the Rekluse clutch pack and can be set aside.



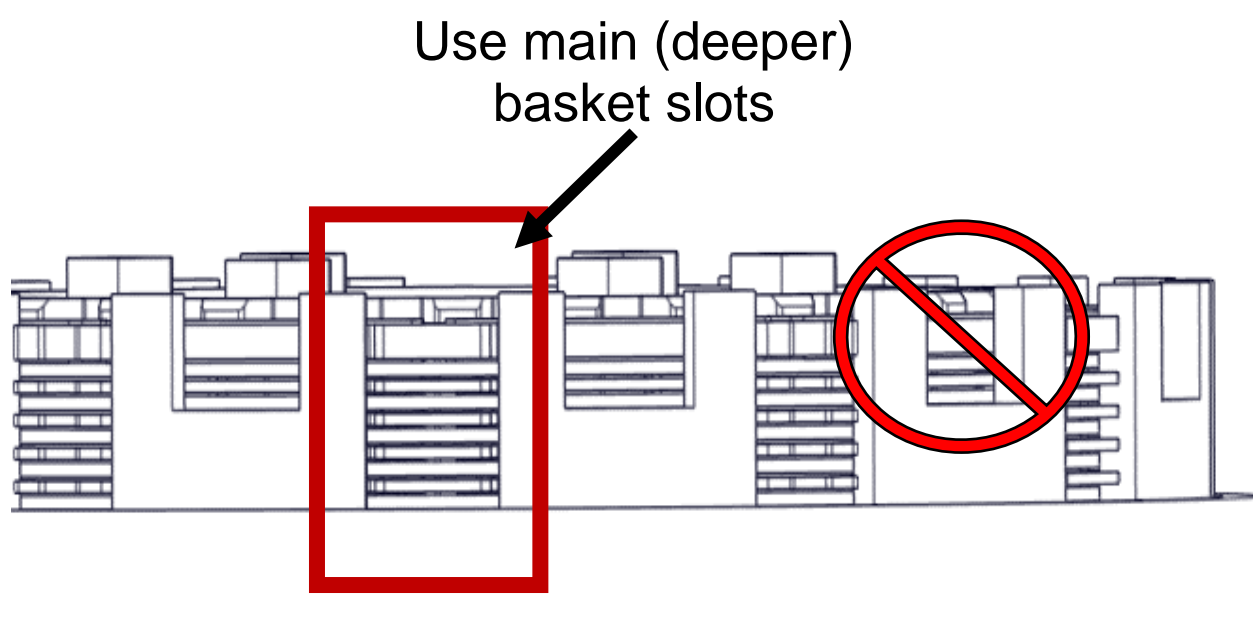
1	Pressure plate bolts
2	Pressure plate springs
3	Pressure plate
4	Throwout
5	Clutch pack
6	Judder seat and spring



# **CLUTCH PACK INSTALLATION**

## **Notes for installation**

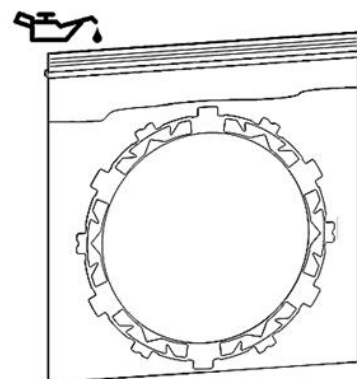
- *Some friction disks are marked with a small colored dot. This mark is used for processing and can be ignored.*
- *Some OE basket have “half slots” at the top of the basket tangs. Rekluse products require the entire clutch pack be installed into the MAIN (deeper) basket slots. Installing the clutch pack into the “half slots” will cause performance issues. See the following picture for reference.*



*Representative image. Basket may appear different than the stock basket.*

## **Clutch pack**

1. Soak the EXP disk and all friction disks in engine oil for 5 minutes. Make sure the EXP and friction disks are coated on both sides.

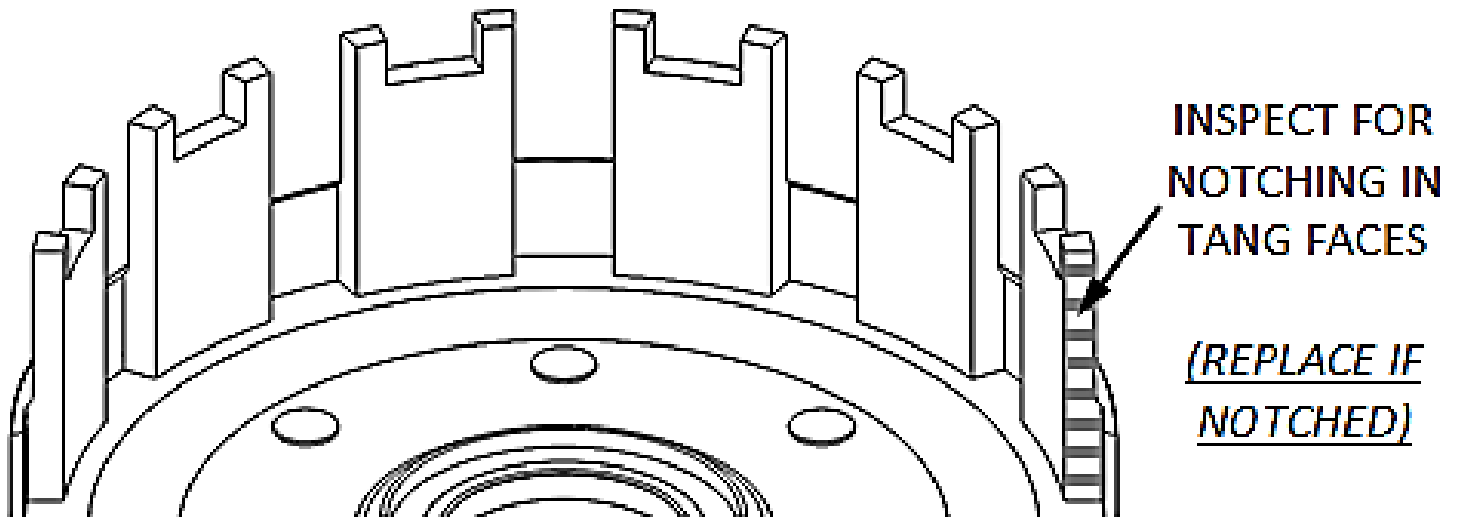


2. Inspect the clutch basket for notching. Do not install sleeves or use product with a notched basket. Notched basket tang faces can cause the sleeves to break. Do not use baskets that have been filed, machined, or modified on the tangs. Replace basket if necessary.



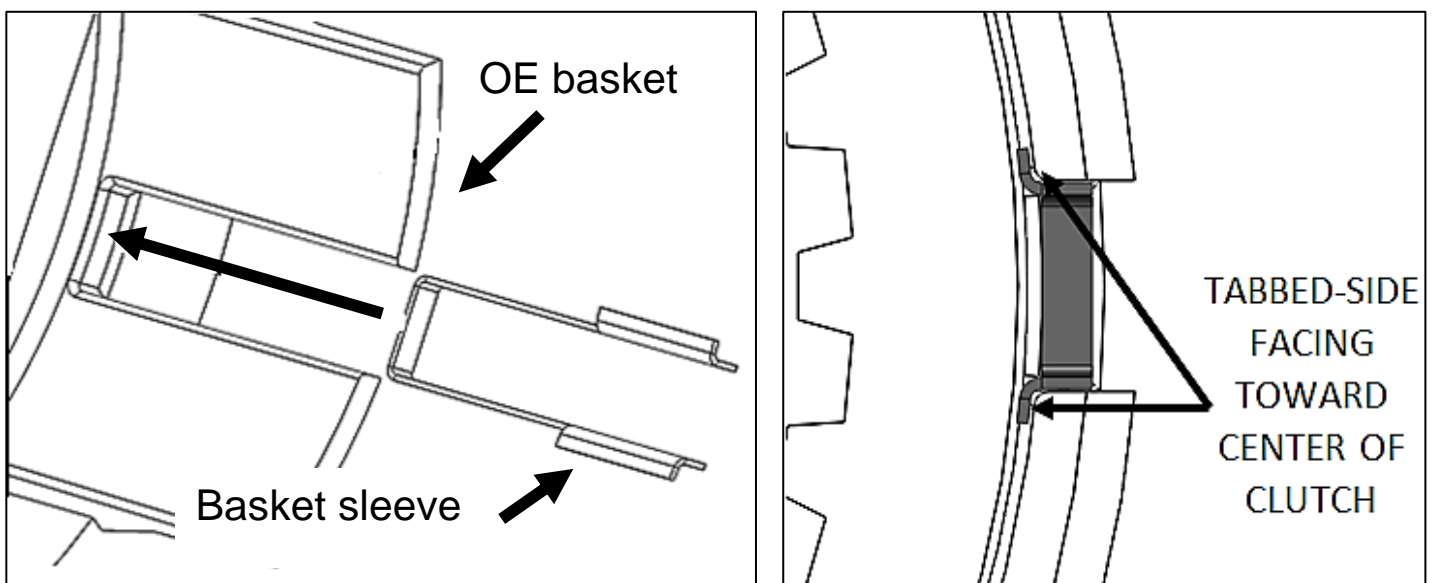
**⚠ WARNING**

Failure to inspect the basket and replace if necessary could result in death, serious injury, and/or property damage.



*Representative image. Basket may appear different than the stock basket.*

3. Install **ALL** the Rekluse basket sleeves into the basket slots. Make sure the sleeve tabs sit against the inside of the basket, then push the sleeves down until they contact the bottom of the tang slot. See pictures for reference.

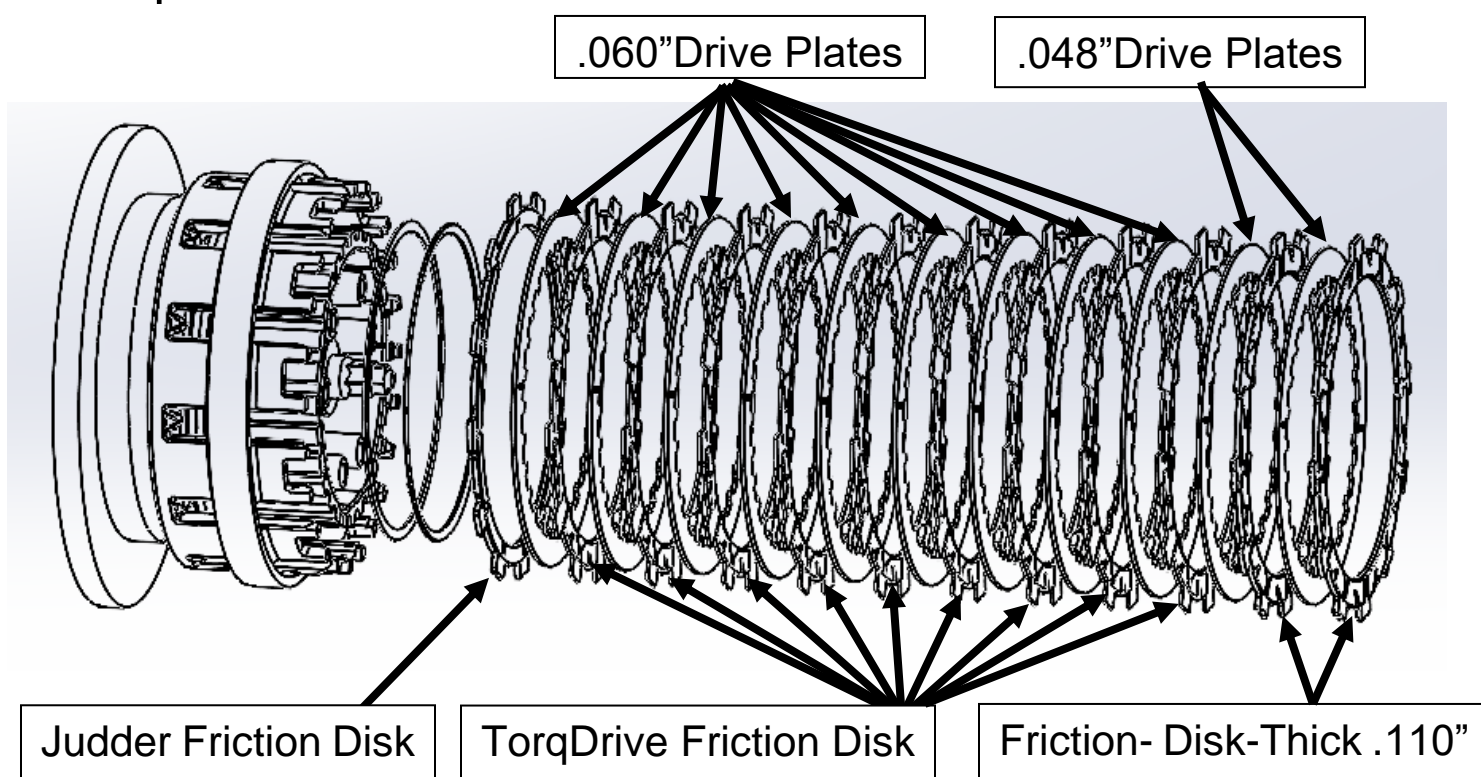


*Representative image. Basket may appear different than the stock basket.*

**NOTE:** When seated in the basket slots, the sleeves will sit slightly below flush with the top of the basket tangs. This is normal.

**NOTE:** See the setup sheet at the back of the manual for the clutch pack configuration.

4. Confirm that the judder spring seat and judder spring are installed.
5. Install the .110" judder friction.
6. Install a .060" drive plate followed by a TorqDrive friction.
7. Alternate the 8 remaining .060" drive plates with 8 TorqDrive frictions.



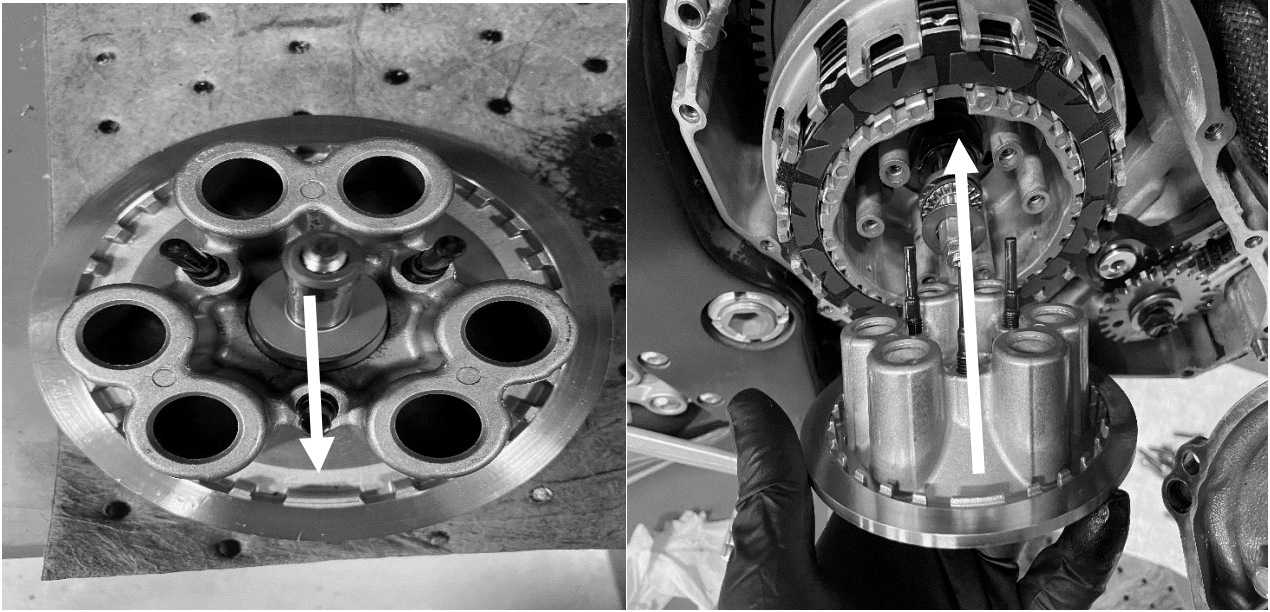
8. Install a .048" drive plate followed by a Thick TorqDrive friction disk.
9. Install the remaining .048" drive plate and the last Thick TorqDrive friction.
10. Install the throwout assembly.



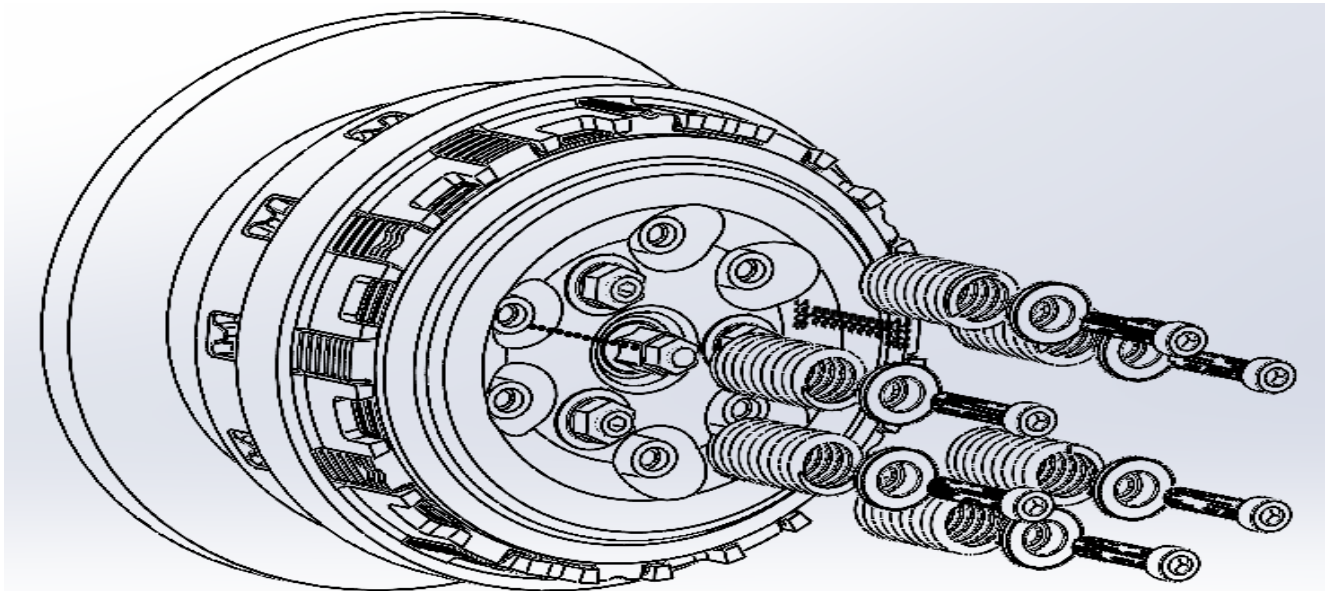
**NOTE:** The throwout washer may be stuck to the pressure plate.

# **PRESSURE PLATE INSTALLATION**

1. Install the pressure plate by aligning the large tab on the pressure plate with the large cut out in the center hub.



2. Install the Rekluse pressure plate springs, spring sleeves, and pressure plate bolts.



**NOTE:** Alternate the **STEEL** and **OLIVE** pressure plate springs.

3. Lightly tighten the pressure plate bolts, then torque to 10 N-m (89 in-lbs).



# **SET THE LEVER FREE PLAY**

1. Adjust the inline perch adjuster to the fully collapsed position.



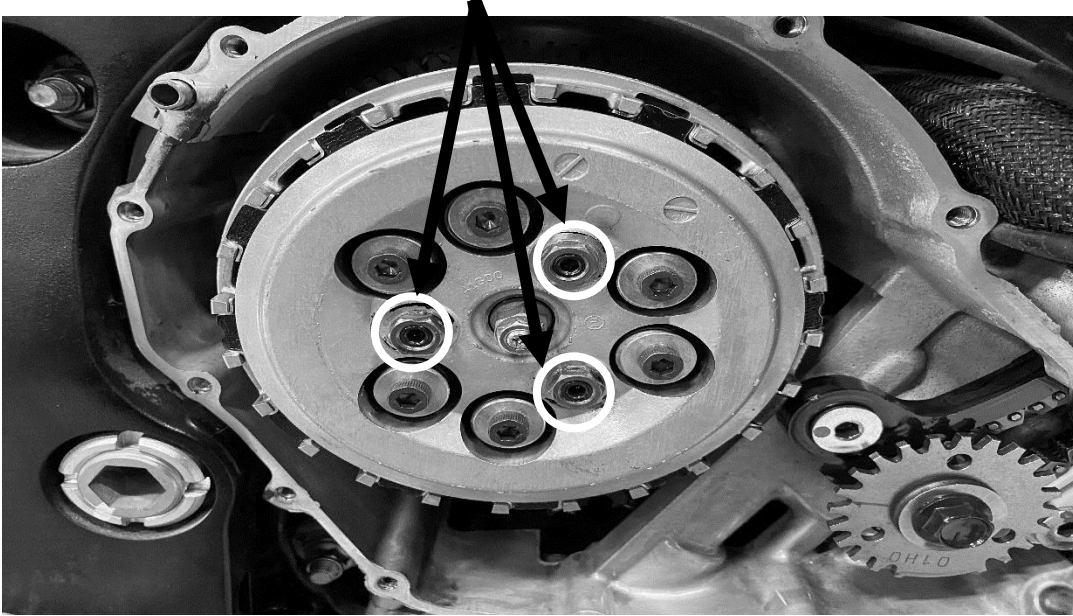
2. Using 12mm and 10mm wrenches, loosen the lock nut on the throw out adjuster.



3. Using the 12mm wrench to hold the throw out, turn the adjuster screw counterclockwise until there is no resistance felt.
4. Turn the adjuster screw clockwise until initial resistance is felt, now turn the adjuster screw a 1 turn counterclockwise.
5. Using the 12mm and 10mm tighten the lock nut.
6. Set the clutch lever free play between 10-15mm (0.4-0.6in).

# **SETTING THE CLUTCH LIFTER PINS**

1. Using a 12mm wrench and a 4mm allen, loosen the lock nut on the three clutch lifter pins.



**NOTE:** *Setting the lifter pins is crucial for setting the amount of back torque (engine braking).*

## **⚠ WARNING**

**Failure to properly set the clutch lifter pins can cause clutch slip, premature wear, and clutch failure.**

2. Using the 4mm allen, turn the three lifter pins counterclockwise until no resistance is felt.
  3. Now, using the 4mm allen turn each clutch lifter pin clockwise until slight resistance is felt.
- NOTE:** *This is the starting point for setting the amount of slip (back torque or engine braking).*
4. With all three clutch lifter pins set to the starting point, use the 4mm allen on each clutch lifter pin to make a  $\frac{1}{2}$  rotation counterclockwise.
  5. Tighten each clutch lifter pin lock nut to 23 N-m (16.5 ft-lbs).

**NOTE:** *For more detailed information on setting the clutch lifter pins consult your owner's manual.*

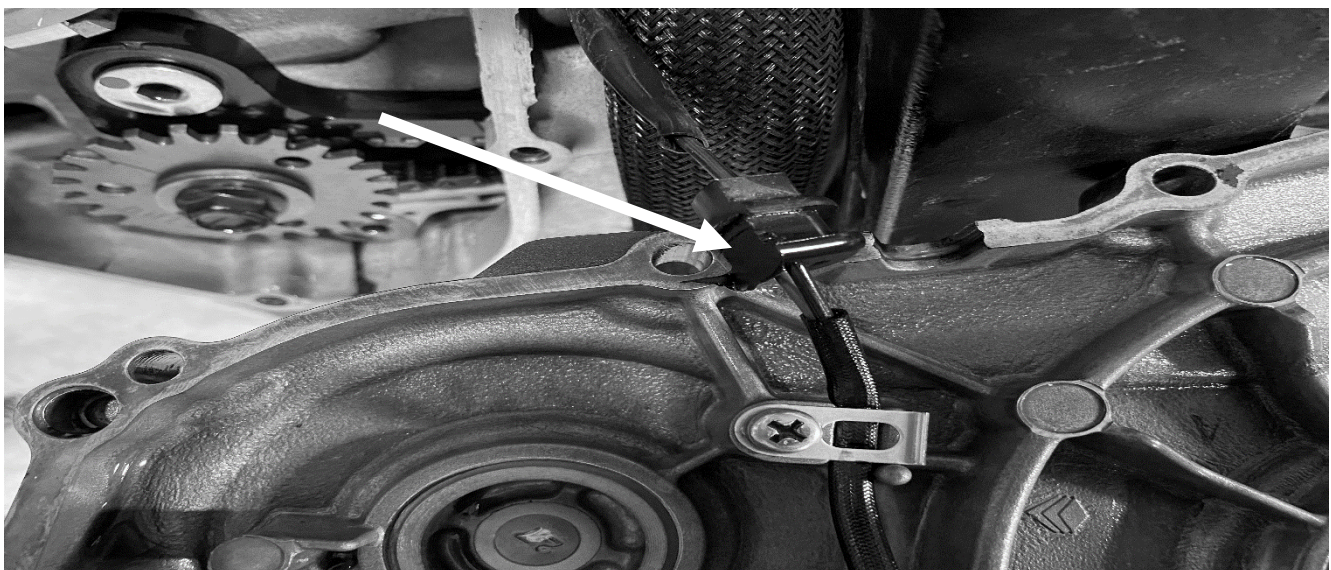


# **CLUTCH COVER INSTALLATION**

1. Clean the clutch cover and engine case mating surfaces.
2. If removed, reinstall the two dowel pins.



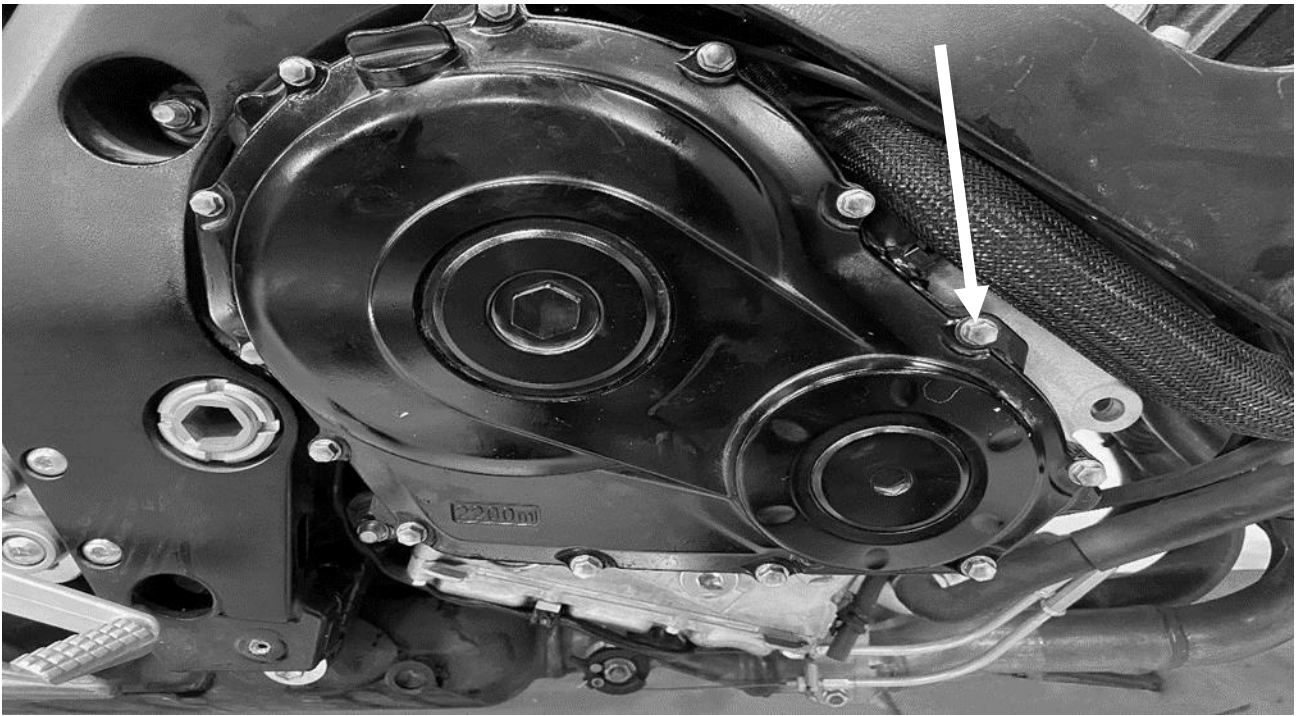
3. Apply a thin layer of liquid gasket to the seams in the engine cases, located just below the two dowel pins.
4. Reinstall the clutch cover gasket
5. Clean, then apply a thin layer of liquid gasket to the mating surface of the sensor's rubber grommet.





6. Reinstall the clutch cover.

7. Reinstall the clutch cover bolts making sure to place the bolt with the sealing washer to the original location



8. Lightly tighten the bolts, then torque to 10 N-m (89 in-lbs).

## **MAINTENANCE**

### **Clutch wear**

Rekluse clutch packs are built using high quality materials but do wear based on the rider's use, type of terrain, and natural wear and tear.

- Clutch longevity and performance is greatly increased with oil quality and other bike factors that reduce engine heat.
- Riding style, such as speed, engine RPM, and terrain can also affect the life of the clutch pack.
- To keep your clutch performing at its best, perform regular maintenance on your bike and clutch based on your riding style.

- For optimal clutch performance Rekluse recommends using fresh, clean oil that **meets JASO-MA** oil rating requirements. Rekluse offers Factory Formulated Oil™ developed specifically for Rekluse products. Rekluse Factory Formulated Oil is a perfect complement to any OEM or aftermarket wet clutch. Visit [www.rekluse.com](http://www.rekluse.com) to learn more.
- Keep up with regular oil changes as per the bike manufacturer's recommendations. Clutch performance and longevity depend on oil quality.

### **Clutch parts**

Inspect all your clutch parts at regular intervals for signs of wear or excessive heat and replace components as necessary.

- Measuring the clutch pack can help determine if the components need replacing. The clutch pack is measured with the entire clutch pack together. Include the friction pad in the measurement. See the **Setup Sheet at the back of the manual** for clutch pack measurements.
- Change the oil filter and/or clean the oil screen with every oil change.

### **Basket:**

- Inspect and replace basket sleeves if they appear to be notched from friction disks. Rekluse recommends replacing them according to the maintenance schedule, if you notice wear, or every time friction disks are replaced.

# **INSPECT THE CLUTCH PACK**

**Disk inspection examples:** When inspecting the clutch pack, the following pictures can be used as a reference. **These are best viewed in color by viewing this install document on our website at [www.rekluse.com/support](http://www.rekluse.com/support).**

**Drive Plates** – If the clutch pack is getting high amounts of heat, purple, blue, or black color can be seen on the drive plate teeth. See pictures below. Not all drive plates look the same and may look different than pictured.



Normal Heat

High Heat  
(Blue)

Excessive Heat  
(Black)

**Friction Disks** – Due to the dark color of the friction material, the friction disks will appear almost black as soon as they are put in oil.

During inspection, look for glazing of the friction material. Glazing will appear shiny and feel like glass, even after oil is cleaned from the friction disk. Not all friction disks look the same and may look different than pictured.



Normal Friction



Glazed Friction

# **NEED ADDITIONAL HELP?**

## **Website**

[www.rekluse.com/support](http://www.rekluse.com/support)

## **Frequently Asked Questions**

[www.rekluse.com/faq](http://www.rekluse.com/faq)

## **Support Videos**

[www.rekluse.com/support/videos](http://www.rekluse.com/support/videos)

## **Phone**

(208) 426-0659

## **Technical Support**

Contact Technical Support for questions related to product installation, tuning, and performance.

Technical Support hours:

Monday thru Friday: 8:00 a.m. - 5:00 p.m.

Mountain Time zone

Email: [tech@rekluse.com](mailto:tech@rekluse.com)

## **Customer Service**

Contact Customer Service for additional product information, orders, and returns.

Customer Service hours:

Monday thru Friday: 8:00 a.m. - 5:00 p.m.

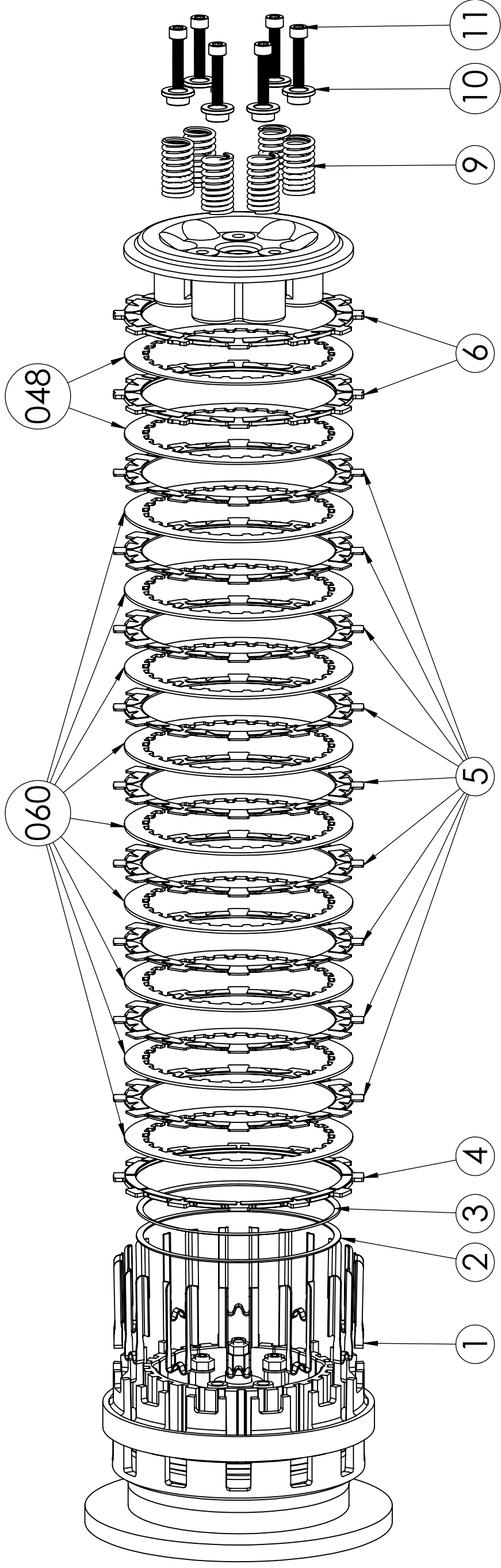
Mountain Time zone

Email: [customerservice@rekluse.com](mailto:customerservice@rekluse.com)





# SETUP SHEET 198-2806002



## SERVICE LIMITS

COMPONENT	STANDARD	SERVICE LIMIT
TORQDRIVE FRICTION	.068-.072in 1.73-1.83mm	.065in 1.65mm
JUDDER FRICTION	.109-.111in 2.77-2.82mm	.106in 2.69mm
THICK FRICTION	.109-.111in 2.77-2.82mm	.106in 2.69mm

## COMPONENTS

ITEM NUMBER	DESCRIPTION	QTY
1	BASKET SLEEVE	12
2	OE JUDDER SEAT - REUSE	1
3	OE JUDDER SPRING - REUSE	1
4	FRICTION DISK - JUDDER - .110" [2.8mm]	1
5	TORQDRIVE FRICTION DISK - .070" [1.8mm]	9
6	FRICTION DISK - THICK-.110" [2.8mm]	2
060	STEEL DRIVE PLATE - .060" [1.5mm]	9
048	STEEL DRIVE PLATE - .048" [1.2mm]	2
9	PRESSURE PLATE SPRING	6
10	REKLUSE SPRING WASHER	6
11	REKLUSE PRESSURE PLATE SPRING SCREW	6

