



# INSTALLATION & USER'S GUIDE

TorqDrive® Clutch Pack  
For Hayabusa Gen II (2008-2019)

**Pre-installation note:**

- Be aware that installing the clutch requires the removal of the side cowling to access the clutch. Consult the OE service manual for these instructions.

# **TABLE OF CONTENTS**

OVERVIEW .....	2
INSTALLATION TIPS .....	3
TOOLS NEEDED.....	3
INCLUDED PARTS .....	4
DISASSEMBLE THE CLUTCH .....	5
CLUTCH PACK INSTALLATION.....	6
Notes for installation.....	6
Install the clutch pack.....	6
Install pressure plate.....	10
MAINTENANCE.....	11
Clutch wear .....	11
INSPECT THE CLUTCH PACK .....	12
NEED ADDITIONAL HELP?.....	14

## **OVERVIEW**

This kit replaces the OE (Original Equipment) clutch pack with a Rekluse TorqDrive<sup>®</sup> clutch pack. The following parts are replace:

- All OE steel drive plates will be replaced with Rekluse steel drive plates.
- All OE friction disks will be replaced with Rekluse TorqDrive<sup>®</sup> disks.
- The OE pressure plate springs are replaced with Rekluse springs.

## INSTALLATION TIPS

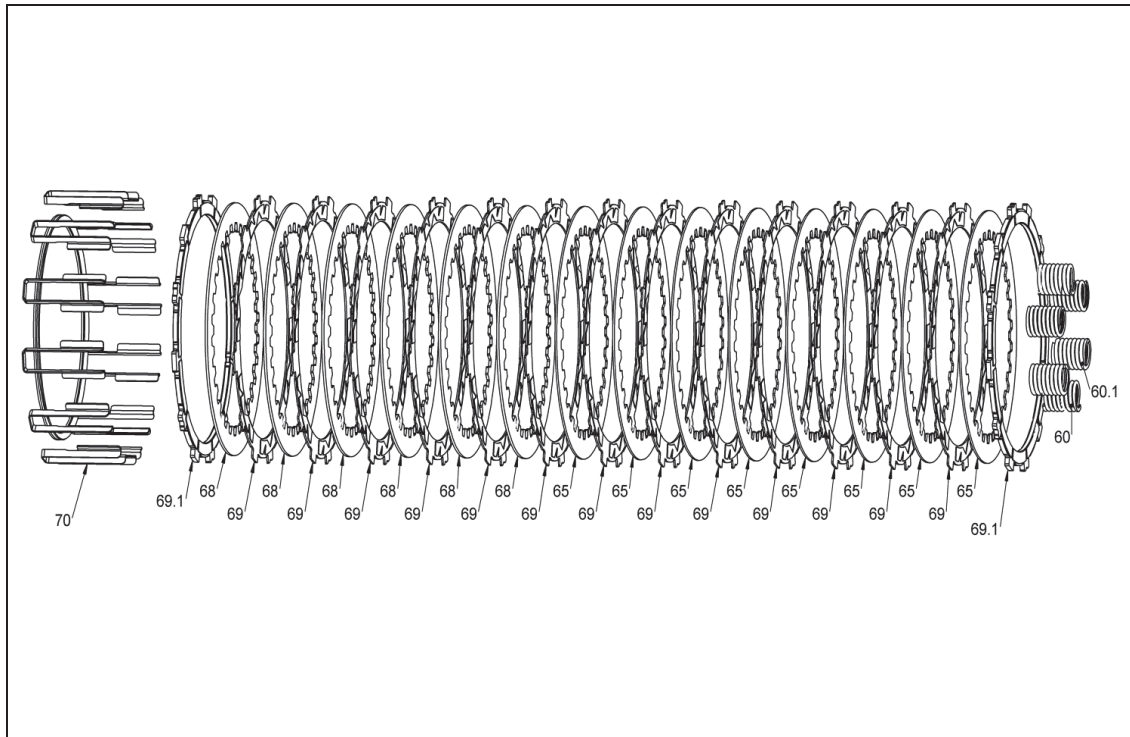


- Read the safety information sheet included with your kit.
- Protect eyes and skin – wear safety glasses and thin disposable work gloves.
- Read this entire document before performing any steps.
- Place motorcycle on its side stand. This makes the clutch work easier and eliminates the need to drain the oil.
- For optimal clutch performance Rekluse recommends using fresh, clean oil that **meets JASO-MA** oil rating requirements. Rekluse offers Factory Formulated Oil™ developed specifically for Rekluse products. Rekluse Factory Formulated Oil is a perfect complement to any OEM or aftermarket wet clutch. Visit [www.rekluse.com](http://www.rekluse.com) to learn more.

## TOOLS NEEDED

- 8 mm socket
- 10 mm socket
- Torque wrench
- Fluid catch container

# **INCLUDED PARTS**

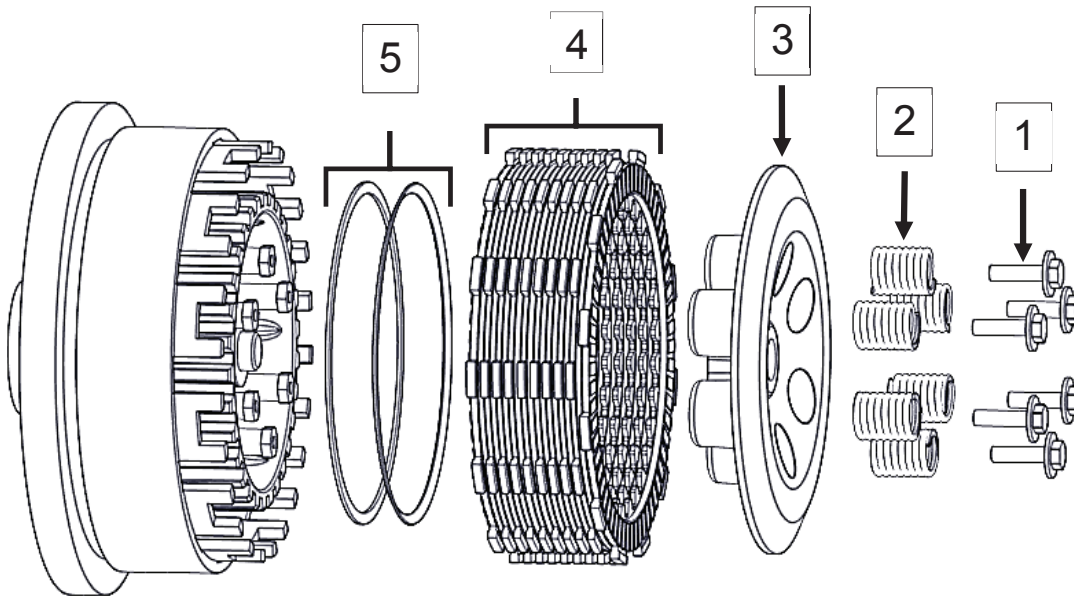


<b>Item</b>	<b>Description</b>	<b>Qty.</b>
60/ 60.1	Pressure plate springs – 3 green and 3 Silver	6 total
65	Steel drive plates – .048” (1.2 mm)	8
68	Steel drive plates – .065” (1.6 mm)	6
69	TorqDrive <sup>®</sup> friction disks	13
69.1	Thick TorqDrive <sup>®</sup> friction disks - .150” (3.81 mm)	2
70	Basket sleeves	12

Visit [www.rekluse.com/support](http://www.rekluse.com/support) for a full parts fiche illustration and part numbers.

# **DISASSEMBLE THE CLUTCH**

1. Remove the side cowling on the right side of the bike according to the OE service manual.
2. With the bike on its side stand, use an 8 mm socket to remove the clutch cover.
3. Use a 10 mm socket to remove the following OE parts:

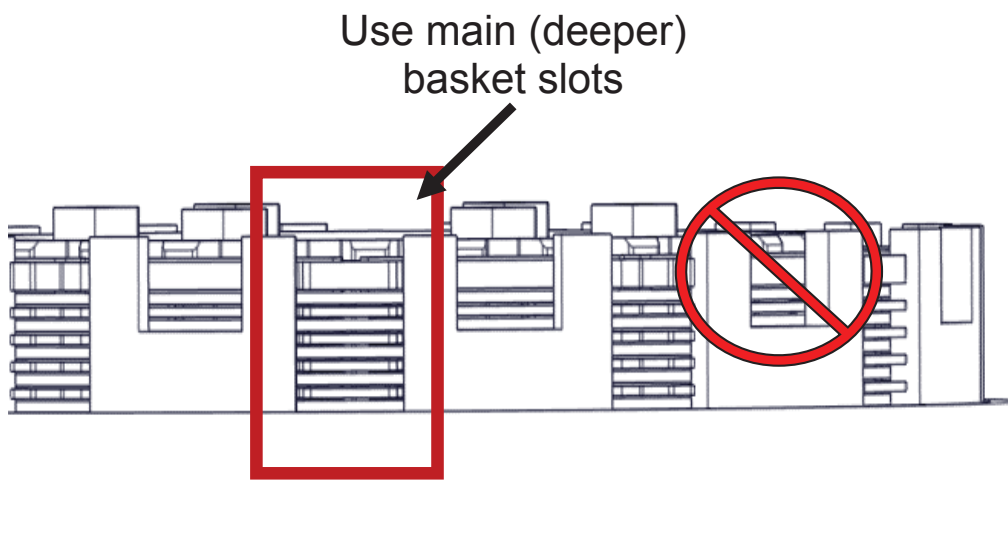


1	Pressure plate bolts
2	Pressure plate springs
3	Pressure plate
4	Clutch pack
5	Judder seat and spring

# **CLUTCH PACK INSTALLATION**

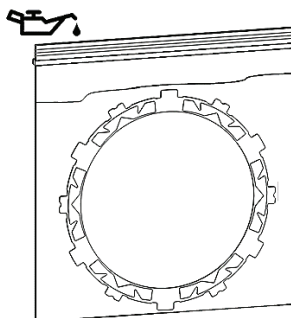
## **Notes for installation**

- *Some friction disks are marked with a small colored dot. This mark is used for processing and can be ignored.*
- *Some OE basket have “half slots” at the top of the basket tangs. Rekluse products require the entire clutch pack be installed into the MAIN (deeper) basket slots. Installing the clutch pack into the “half slots” will cause performance issues. See the following picture for reference.*



## **Install the clutch pack**

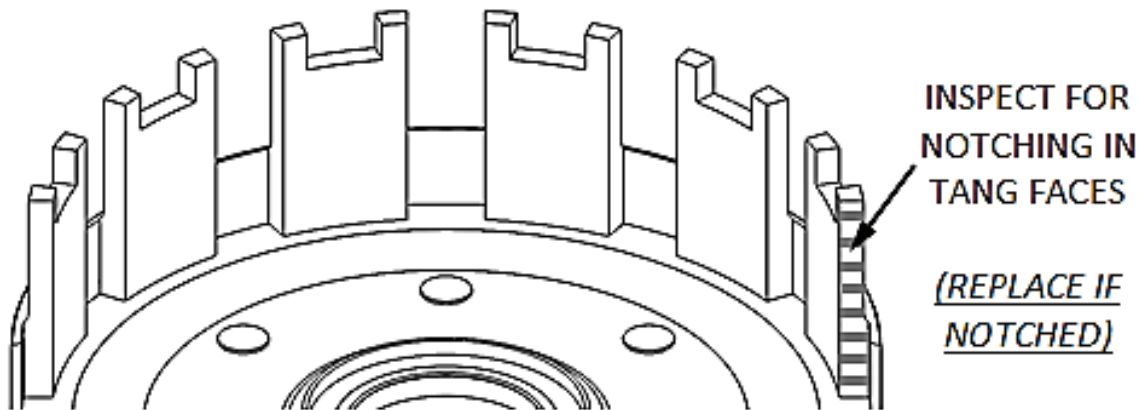
1. Soak the Rekluse friction disks in new oil for at least 5 minutes. Make sure the friction disks are coated on both sides.



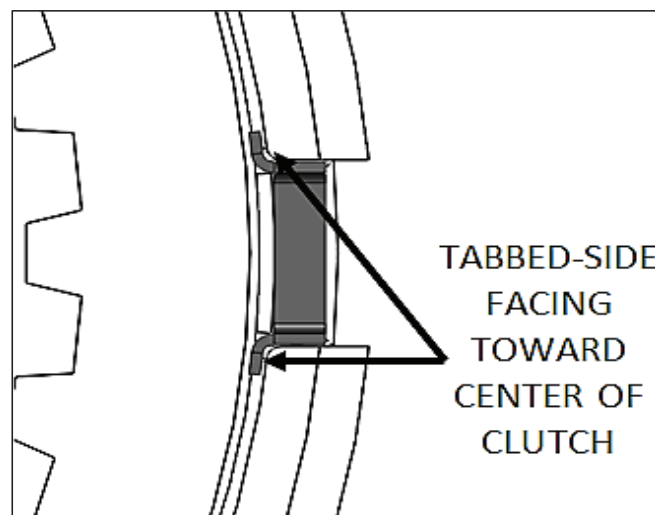
2. Inspect the clutch basket for notching. Do not install sleeves or use product with a notched basket. Notched basket tang faces can cause the sleeves to break. Do not use baskets that have been filed, machined, or modified on the tangs. Replace basket if necessary.

**⚠ WARNING**

**Failure to inspect the basket and replace if necessary could result in death, serious injury, and/or property damage.**

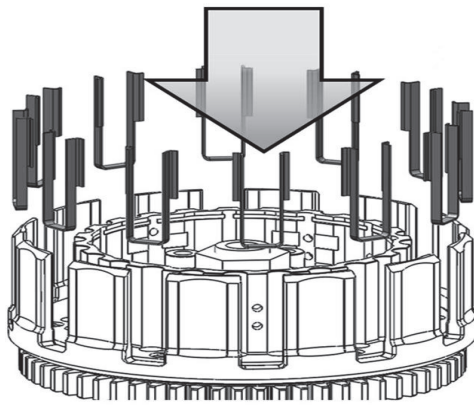


3. Install **ALL** the Rekluse basket sleeves into the basket slots. Make sure the sleeve tabs sit against the inside of the basket, then push the sleeves down until they contact the bottom of the tang slot. See pictures for reference.

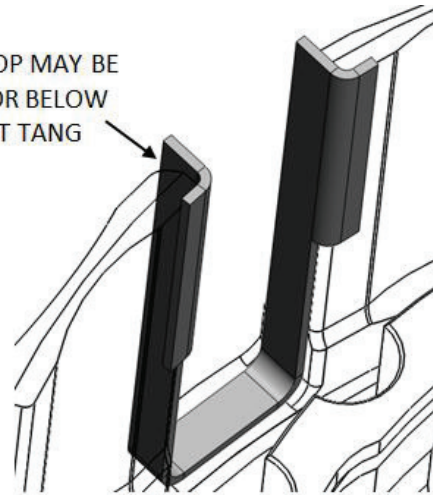




## Install all the basket sleeves



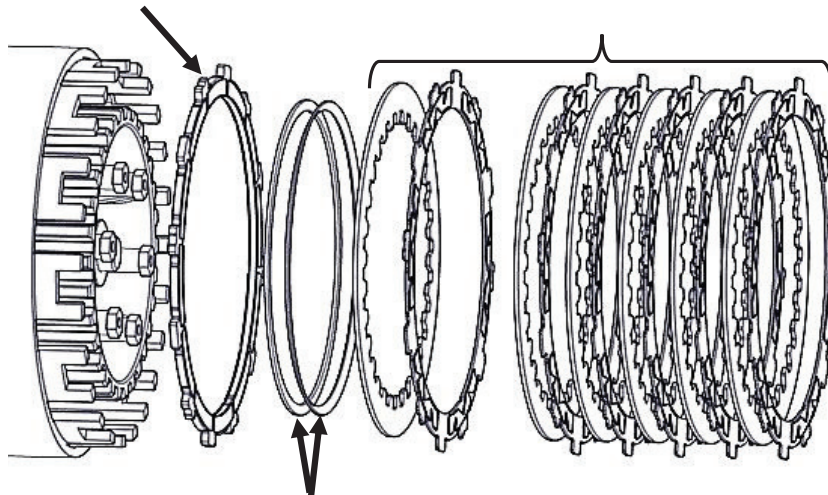
SLEEVE TOP MAY BE ABOVE OR BELOW BASKET TANG



4. Install a thick Rekluse friction disk into the clutch basket.
5. Reinstall the judder seat, then reinstall the judder spring, **cupped side up**.
6. Next, install a .065" (1.6 mm) steel drive plate followed by a thin friction disk.
7. Continue to alternate 5 additional - .065" (1.6 mm) steel drive plates with 5 additional thin friction disks.

Thick friction

Alternate 6 - .065" (1.6 mm) steel drive plates and 6 friction disks

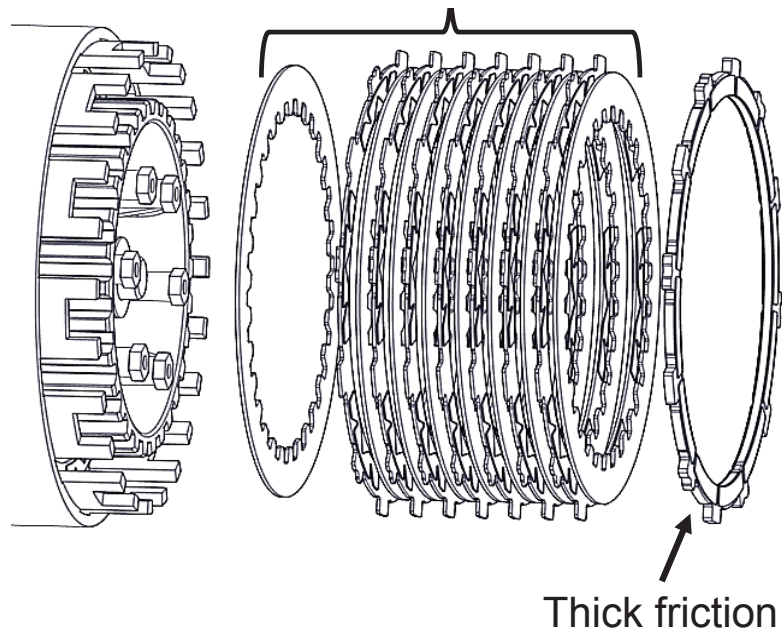


Judder seat and spring



8. On top of the last friction disk, install a .048" (1.2 mm) steel drive plate.
9. Alternate the remaining 7 - .048" (1.2 mm) friction disks with the remaining 7 steel drive plates.
10. On top of the last steel drive plate, install the last thick friction disk.

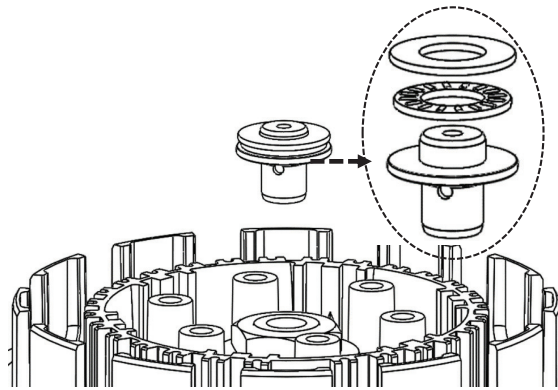
Alternate a total of 8 - .048" (1.2 mm) steel drive plates with 7 friction



# INSTALL PRESSURE PLATE

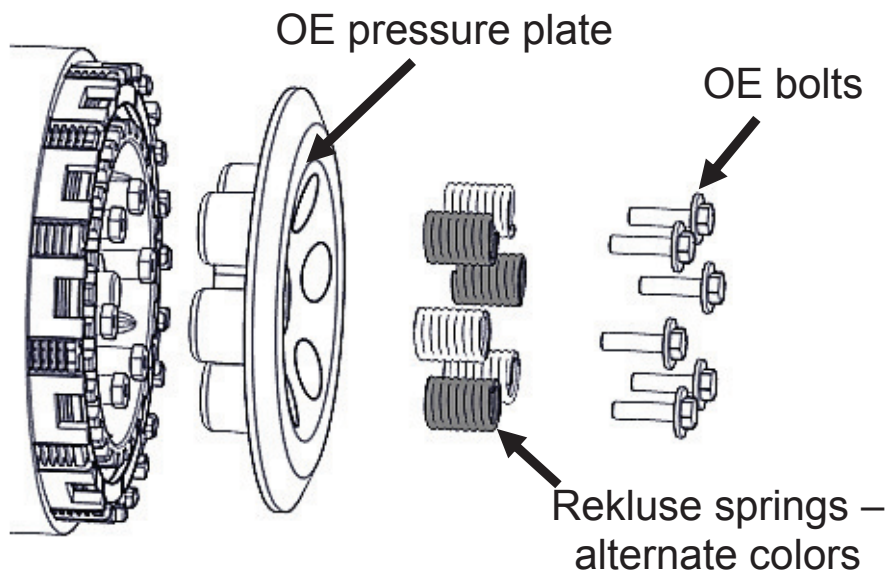
1. Reinstall the OE pressure plate.
2. Check that the throw-out washer is still in place on the throw-out.

**Note:** *If the throw-out washer is missing, check to see if it is stuck to the underside of the pressure plate.*



3. Install the Rekluse pressure plate springs.

**Note:** *Be sure to alternate springs if you are using two different color springs to keep even pressure on the clutch.*



4. Reinstall the OE pressure plate bolts.
5. Loosely tighten the bolts, then torque them in a star pattern to **7 ft-lb (10 N-m)**.

6. Reinstall the clutch cover, then lightly tightening the cover bolts in a star pattern. Tighten bolts in small increments before torquing the cover bolts to OE specifications.
7. Reinstall the side cowling according to the OE service manual.

## **MAINTENANCE**

### **Clutch wear**

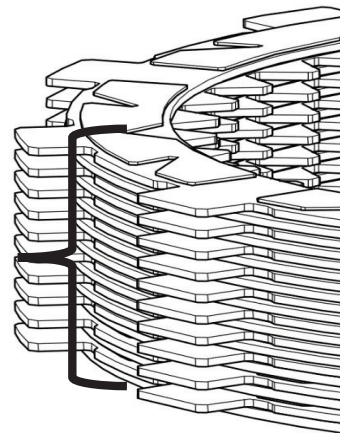
Rekluse clutch packs are built using high quality materials but do wear based on the rider's use, type of terrain, and natural wear and tear.

- Clutch longevity and performance is greatly increased with oil quality and other bike factors that reduce engine heat.
- Riding style, such as speed, engine RPM, and terrain can also affect the life of the clutch pack.
- To keep your clutch performing at its best, perform regular maintenance on your bike and clutch based on your riding style.

### **Clutch parts**

Inspect all your clutch parts at regular intervals for signs of wear or excessive heat and replace components as necessary.

- Measuring the clutch pack can help determine if the components need replacing. The clutch pack is measured with the entire clutch pack together. Include the friction pad in the measurement. See the **Setup Sheet at the back of the manual** for clutch pack measurements.



# **INSPECT THE CLUTCH PACK**

**Disk inspection examples:** When inspecting the clutch pack, the following pictures can be used as a reference. **These are best viewed in color by viewing this install document on our website at [www.rekluse.com/support](http://www.rekluse.com/support).**

**Drive Plates** – If the clutch pack is getting high amounts of heat, purple, blue, or black color can be seen on the drive plate teeth. See pictures below. Not all drive plates look the same and may look different than pictured.



Normal Heat

High Heat  
(Blue)

Excessive Heat  
(Black)

**Friction Disks** – Due to the dark color of the friction material, the friction disks will appear almost black as soon as they are put in oil.

During inspection, look for glazing of the friction material. Glazing will appear shiny and feel like glass, even after oil is cleaned from the friction disk. Not all friction disks look the same and may look different than pictured.



Normal Friction



Glazed Friction

## Preventive Maintenance

- For optimal clutch performance Rekluse recommends using fresh, clean oil that **meets JASO-MA** oil rating requirements. Rekluse offers Factory Formulated Oil™ developed specifically for Rekluse products. Rekluse Factory Formulated Oil is a perfect complement to any OEM or aftermarket wet clutch. Visit [www.rekluse.com](http://www.rekluse.com) to learn more.
- Keep up with regular oil changes as per the bike manufacturer's recommendations. Clutch performance and longevity depend on oil quality.
- Change the oil filter and/or clean the oil screen with every oil change.

## Basket:

- Inspect and replace basket sleeves if they appear to be notched from friction disks. Rekluse recommends replacing them according to the maintenance schedule, or every time friction disks are replaced.

# **NEED ADDITIONAL HELP?**

## **Website**

[www.rekluse.com/support](http://www.rekluse.com/support)

## **Frequently asked questions**

[www.rekluse.com/faq](http://www.rekluse.com/faq)

## **Support Videos**

[www.rekluse.com/support/videos](http://www.rekluse.com/support/videos)

## **Phone**

(208) 426-0659

## **Technical Support**

Contact Technical Support for questions related to product installation, tuning, and performance.

### **Hours:**

Monday thru Friday: 8:00 a.m. - 5:00 p.m.  
Mountain Time zone

Email: [tech@rekluse.com](mailto:tech@rekluse.com)

## **Customer Service**

Contact Customer Service for additional product information, orders, and returns.

### **Hours:**

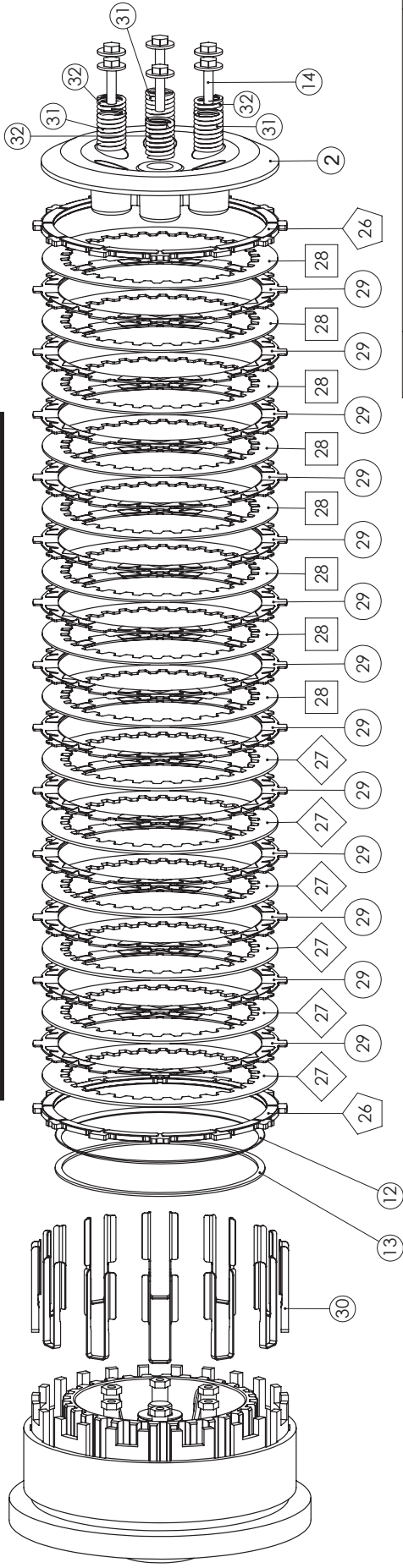
Monday thru Friday: 8:00 a.m. - 5:00 p.m.  
Mountain Time zone

Email: [customerservice@rekluse.com](mailto:customerservice@rekluse.com)

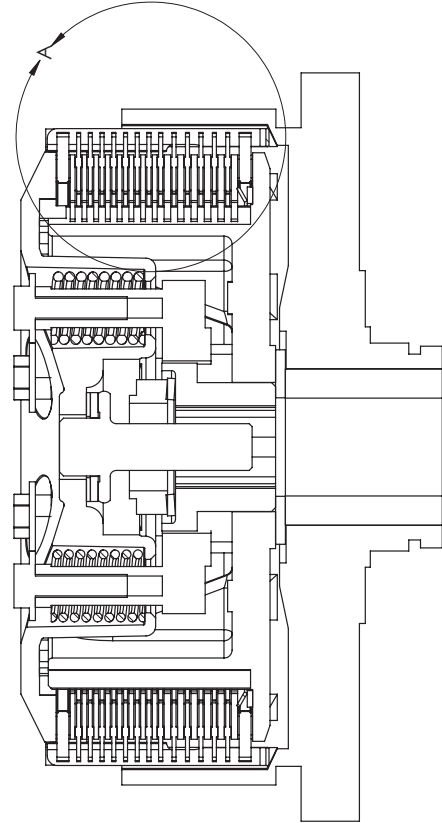
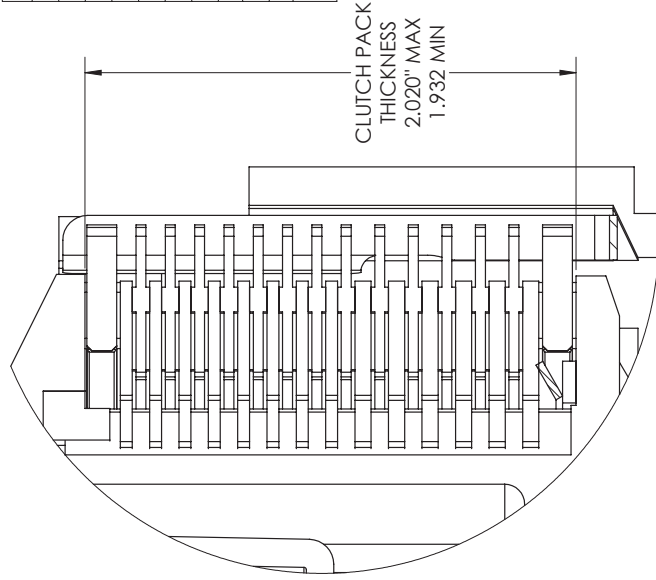




# SETUP SHEET 198-2806000



ITEM NO.	DESCRIPTION	QTY.
2	OEM PRESSURE PLATE	1
12	OEM JUDDER SPRING	1
13	OEM JUDDER SPRING SEAT	1
14	OEM SPRING BOLTS	6
26	FRICION DISK - .150" THICK	2
27	DRIVE PLATE - 0.65" THICK	6
28	DRIVE PLATE - .048" THICK	8
29	FRICION DISK - TORQDRIVE	13
30	BASKET SLEEVES	12
31	GREEN REKLUSE PRESSURE PLATE SPRINGS	3
32	SILVER REKLUSE PRESSURE PLATE SPRINGS	3



DETAIL A  
SCALE 2 : 1